

## **Paragraph 4**

## **Order**

### ***EDIFACT Order***

The definition of the international (UN) EDIFACT order is as follows:

#### ***Functional definition***

A message containing information on articles or services ordered according to agreement between buyer and seller.

#### ***Principles***

An order may contain several articles or services.

An order may contain articles or services that refer to one or more delivery schedules, renouncements etc. (only plumbers).

An order may contain information on transport, place and time(s) of delivery.

#### ***The VVS EDIFACT Guideline***

In the Guideline the EDIFACT-message for the order is used for the following transactions:

#### ***Order***

Binding order from the buyer to the seller. The purchase order may be given by means of the following transactions:

#### ***Purchase order***

Purchase order is an order for purchase to stock according to agreement.

#### ***Special purchase order***

Special purchase order is an order for ad hoc purchase to agreement.

### ***Telephone order***

A telephone order is an order confirmation that is registered by the supplier.

### **The following only applies for plumbers.**

#### **Conditional order (construction order, forecast order, project sale etc.)**

Here the buyer asks the seller NOT to deliver until further information concerning the transaction is given from the buyer to the seller. This means that a conditional order is followed by a renouncement where quantity, delivery place and time are indicated.

The conditional order is followed by a renouncement at the time of delivery or by a delivery plan and a following renouncement.

The conditional order and delivery plan should be linked together.

#### **Renouncement**

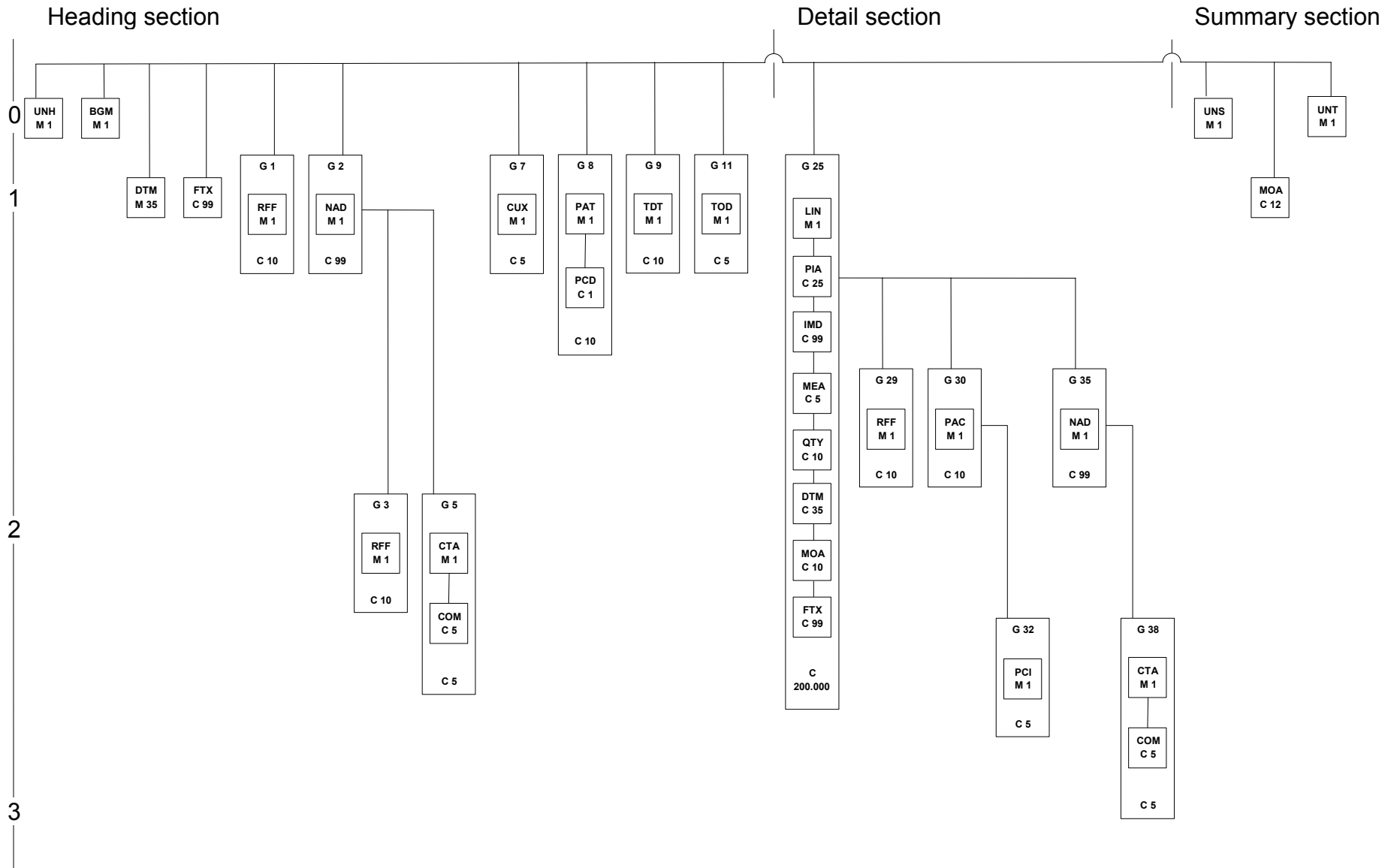
The renouncement from the buyer releases delivery of the goods ordered in the conditional order. Seller expects to deliver the specified goods and quantities without further instructions from the buyer.

Renouncement cannot be effected until an order acknowledgement has been forwarded.

#### **Delivery plan**

In the delivery plan, the buyer informs the seller where, when and/or how the ordered goods must be delivered. The delivery plan only applies to conditional orders. It is NOT a renouncement but may be part of the conditional order.

Definition of DAVID order



## Heading section

<b>UNA/UNB</b>			
The UNA and UNB segments begin a dispatch and may be regarded as the envelope of the dispatch. The UNB segment is used by the recipient EDI-system to recognise the sender and the recipient.			
The UNB segment contains the EAN-location numbers of the buyer/sender and the seller/recipient. Identifications are only indicated in the UNB-segment.			
<b>Seg-/ element</b>	<b>Contents</b>	<b>Status/Rep. Length</b>	<b>Codes / contents</b>
<b>UNA</b>	<b>Definition of control character</b>	<b>C 1/a3</b>	<b>UNA:+,? '</b>
<b>UNB</b>	<b>Beginning of message</b>	<b>M 1/a3</b>	<b>UNB</b>
S001	SYNTAX ID	M	
0001	Syntax rule, id	M a4	<b>UNOC = UN/ECE level C (as defined in ISO 646)</b>
0002	Syntax, version number	M n1	<b>3 = Syntax version number 3 (refers to the use of all valid codes in DE 0001)</b>
S002	SENDER	M	
0004	Sender id	M an..35	<b>'EAN-location number'</b>
0007	Partner id qualifier	C an..4	<b>14 = EAN International</b>
0008	Attention specified by sender	C an..14	<b>***</b>
S003	RECIPIENT	M	
0010	Recipient id	M an..35	<b>'EAN-location number'</b>
0007	Partner id qualifier	C an..4	<b>14 = EAN International</b>
0014	Attention specified by recipient	C an..14	<b>***</b>
S004	DISPATCH, TIME	M	
0017	Dispatch, date	M n6	<b>YYMMDD</b>
0019	Dispatch hour	M n4	<b>HHMM</b>
0020	DISPATCH, REFERENCE	M an..14	<b>'Unique reference'</b>
S005	RECIPIENT'S REF. PASSWORD	C	
0022	Recipient's ref./password	M an..14	<b>***</b>
0025	Recipient's ref./password qualifier	C an2	<b>***</b>
0026	APPLICATION REF.	C an..14	<b>***</b>
0029	PROCESSING PRIORITY CODE	C a1	<b>***</b>
0031	ACKNOWLEDGEMENT REQUEST	C n1	<b>1 = Acknowledgement request</b>
0032	AGREEMENT, ID	C an..35	
0035	TEST INDICATOR	C n1	<b>1 = Test</b>
<b>Example:</b>			
UNA:+,? '			
UNB+UNOC:3+5790000001999:14+5790000001998:14+930501:1215+ORDRE999999++++1+DAVID+1'			

<b>UNH - M 1 - Message - start</b>			
<b>Function:</b> The UNH is sent once per document in one dispatch specifying which message is sent, as well as version number and code for the dispatch co-operation.			
<b>Segment number:</b> 001			
<b>Seg-/ element</b>	<b>Contents</b>	<b>Status/Rep. length</b>	<b>Codes / contents</b>
0062	MESSAGE REFERENCE NUMBER	M an..14	<b>Specifies a unique reference for the message</b>
S009	MESSAGE ID	M	
0065	Message type	M an..6	<b>ORDERS</b>
0052	Message, version number	M an..3	<b>D</b>
0054	Message, edition number	M an..3	<b>96A</b>
0051	Publisher	M an..2	<b>UN = United Nations Standard Message (UNSM)</b>
0057	Code for dispatch co-operation	C an..6	<b>DAV050</b> <b>EAN008 = EAN version control number</b>
0068	COMMON SUBJECT REFERENCE	C an..35	***
S010	STATUS OF TRANSFERS	C	
0070	Sequence of transfers	M n..2	***
0073	First/last transfer	C a1	***
<b>Example:</b> UNH+12345+ORDERS:D:96A:UN:DAV050'			

<b>BGM - M 1 - Beginning of message</b>			
<b>Function:</b> The BGM begins the message purchase order and special purchase order sent by wholesalers and blanket order and call off order which can <b>only</b> be forwarded by a plumber.			
<b>Segment number:</b> 002			
<b>Seg-/ element</b>	<b>Contents</b>	<b>Status/Rep. length</b>	<b>Codes / contents</b>
C002	DOCUMENT/MESSAGE NAME	C	
1001	Document/message name, coded	C an..3	<b>220 = Order</b> <b>224 = Special purchase order</b>
1131	Code list qualifier	C an..3	<b>Plumbers only</b> <b>221 = Blanket order</b> <b>226 = Call off order</b> ***
3055	Code list responsible agency, coded	C an..3	***
1000	Document/message name	C an..35	***
1004	DOCUMENT/MESSAGE NUMBER	C an..35	<b>'The buyer's identification of the order'</b> <b># = See code list</b>
1225	MESSAGE FUNCTION, CODED	C an..3	<b>Code to specify the message function</b> <b>42 = Acknowledgement of non-EDI transaction</b> <b>e.g. telephone order or fax order</b>
4343	RESPONSE TYPE, CODED	C an..3	<b>AC = Acknowledgement of order wanted</b> <b>Blank = No acknowledgement of order</b>
<b>Example: BGM+220+S75113++AC'</b>			

<b>DTM - M 35 - Date/time/period</b>			
<b>Function:</b> The DTM segment specifies date, and/or time, or period.			
<b>Segment number:</b> 003			
<b>Seg-/element</b>	<b>Contents</b>	<b>Status/Rep. length</b>	<b>Code / contents</b>
C507	DATE/TIME/PERIOD	M	
2005	Date/time/period, qualifier	M an..3	<b>Code that indicates what date in DE 2380 states</b> <b>2 = Desired delivery time</b>
2380	Date/time/period	C an..35	<b>Specification of date in the format specified in DE 2379</b>
2379	Date/time/period format qualifier	C an..3	<b>102 = CCYYMMDD</b> <b>616 = CCYYWW</b>
<b>Example: DTM+2:20000114:102'</b>			

<b>FTX - C 99 - Free text</b>			
<b>Function:</b> The FTX segment is <b>only</b> used in special cases to indicate a text that causes special treatment of the order by the recipient. Free form text is difficult to treat electronically by the recipient.			
<b>Segment number:</b> 006			
<b>Seg-/element</b>	<b>Contents</b>	<b>Status/Rep. length</b>	<b>Codes / contents</b>
4451	TEXT SUBJECT QUALIFIER	M an..3	<b>AAI = General information</b>
4453	TEXT FUNCTION, CODED	C an..3	***
C107	TEXT REFERENCE	C	
4441	Free text identification	M an..3	***
1131	Code list qualifier	C an..3	***
3055	Code list responsible agency, coded	C an..3	***
C108	TEXT LITERAL	C	
4440	Free text	M an..70	<b>'Text'</b>
4440	Free text	C an..70	<b>'Text'</b>
4440	Free text	C an..70	<b>'Text'</b>
4440	Free text	C an..70	<b>'Text'</b>
4440	Free text	C an..70	<b>'Text'</b>
3453	LANGUAGE, CODED	C an..3	
<b>Example: FTX+AAI+++This is text number 1: This is text number 2'</b>			

<b>SG1 - C 10 - RFF .007</b>			
<b>RFF - M 1 Reference</b>			
<b>Function:</b> The RFF segment is used in various references that the sender wants returned in the acknowledgement of order, dispatch advice and invoice. The reference is valid for the entire order. The segment is <b>only</b> used for electronic information and the max. number of times recommended is 2.			
<b>Segment number:</b> 007			
<b>Seg-/ element</b>	<b>Contents</b>	<b>Status/Rep. length</b>	<b>Codes / contents</b>
C506	REFERENCE	M	
1153	Reference qualifier	M an..3	<b>Code, that indicates, what the reference in DE 1154 states.</b> <b><u>CR = Customer reference number</u></b> <b><u>VN = Order number (vendor)</u></b> <b><u>IV = Invoice number</u></b>
1154	Reference number	C an..35	<b>'Reference to be returned'</b>
1156	Line number	C an..6	***
4000	Reference version number	C an..35	***
<b>Example: RFF+CR:974711-CBA/Z'</b>			

<b>SG2 - C 99 - NAD.009</b>			
<b>NAD - M 1 - Name and address</b>			
<b>Function:</b> The NAD segment specifies the buyer, seller, producer, and delivery place for the entire message (UNH) and invoice address. By means of the code 'DP' or 'IV' in element 3035 place may be specified by full name and address.			
<b>Segment number:</b> 009			
<b>Seg-/element</b>	<b>Contents</b>	<b>Status/Rep. length</b>	<b>Codes / contents</b>
3035	PARTY QUALIFIER	M an..3	<b>Code that indicates which function the party (the location) has</b> <b>BY = Buyer</b> <b>SE = Seller</b> <b>SU = Supplier</b> <b>MF = Manufacturer of goods</b> <b>DP = Delivery party</b> <b>IV = Invoicee</b>
C082	PARTY IDENTIFICATION DETAILS	C	
3039	Party id. Identification	M an..35	<b>EAN location number (n13)</b>
1131	Code list qualifier	C an..3	***
3055	Code list responsible agency, coded	C an..3	<b>9 = EAN</b>
C058	NAME AND ADDRESS	C	
3124	Name and address line	M an..35	***
3124	Name and address line	C an..35	***
3124	Name and address line	C an..35	***
3124	Name and address line	C an..35	***
3124	Name and address line	C an..35	***
C080	PARTY NAME	C	
3036	Party name	M an..35	
3036	Party name	C an..35	
3036	Party name	C an..35	***
3036	Party name	C an..35	***
3036	Party name	C an..35	***
3045	Party name format, coded	C an..3	***
C059	STREET	C	
3042	Street and number/p.o. box	M an..35	
3042	Street and number/p.o. box	C an..35	
3042	Street and number/p.o. box	C an..35	***
3042	Street and number/p.o. box	C an..35	***
3164	CITY NAME	C an..35	<b>City name</b>
3229	COUNTRY SUB-ENTITY IDENTIFICATION	C an..9	***
3251	POST CODE IDENTIFICATION	C an..9	<b>Post code</b>
3207	COUNTRY, CODED	C an..3	***

continue...

**Example:****NAD+SE+5790000013340'****NAD+BY+5790000010622'****NAD+DP+++Sanistål A/S+Baunehøjvej 1-14+Silkeborg+8600'****NAD+IV+++Sanistål A/S++Ålborg****SG2 - C 99 - NAD.009****SG3 - C 10 - RFF.011****RFF - M 1 - Reference****Function:**

In the order the RFF segment in group 3 is only used by the buyer (NAD = BY) to inform the seller that this order refers to a special contract project.

**Segment number:**

011

<b>Seg-/ element</b>	<b>Contents</b>	<b>Status/Rep. length</b>	<b>Codes / contents</b>
C506	REFERENCE	M	
1153	Reference qualifier	M an..3	<b>Code that indicates what the reference in DE 1154 states</b> <b>BC = Buyer's contract number</b> <b>VA = VAT registration number</b> <b>AP = Accounts receivable number</b> <b>XA = Company/place registration number</b>
1154	Reference number	C an..35	<b>'Reference number'</b>
1156	Line number	C an..6	***
4000	Reference version number	C an..35	***

**Example: RFF+BC:888999'**

<b>SG2 - C 99 - NAD.009</b>			
<b>SG5 - C 5 - CTA.012</b>			
<b>CTA - M 1 - Contact information</b>			
<b>Function:</b> To the NAD segment (no. 009), the CTA and COM (no. 013) may be added, in which order contact and department number as well as telephone number may be specified. When element 3035 of the NAD segment is equal to 'BY' or 'DP', the department number of the CTA segment and the department telephone number of the COM segment <b>must</b> always be filled in.			
<b>Segment number:</b> 012			
<b>Seg-/ element</b>	<b>Contents</b>	<b>Status/Rep. length</b>	<b>Codes / contents</b>
3139	CONTACT FUNCTION, CODED	C an..3	<b>Code specifying the function of a contact</b> <b>GR = Goods receiving contact</b> <b>PD = Purchasing contact</b>
C056	DEPARTMENT OR EMPLOYEE DETAILS	C	
3413	Department or employee identification	C an..17	<b>'Department number'</b>
3412	Department or employee	C an..35	<b>'Name'</b>
<b>Example:</b> <b>CTA+PD+:Søren Hansen'</b> <b>CTA+PD+04:Hans Jensen'</b> <b>CTA+GR+11:Jesper Jensen'</b>			

<b>SG2 - C 99 - NAD.009</b>			
<b>SG5 - C 5 - CTA.012</b>			
<b>COM - C 5 - Communication contact</b>			
<b>Function:</b> To the NAD segment (no. 009), the CTA (no. 012) and COM may be added, in which order contact and department number as well as telephone number may be specified. When element 3035 of the NAD segment is equal to 'BY' or 'DP', the department number of the CTA segment and the department telephone number of the COM segment <b>must</b> always be filled in.			
<b>Segment number:</b> 013			
<b>Seg-/ element</b>	<b>Contents</b>	<b>Status/Rep. length</b>	<b>Codes / contents</b>
C076	COMMUNICATION CONTACT	M	
3148	Communication number	<u>M an..51</u>	<b>Information about e.g. telephone- or fax- number</b>
3155	Communication channel qualifier	M an..3	<b>TE = Telephone</b> <b>FX = fax</b> <b>EM = Electronic mail</b>
<b>Example:</b> <b>COM+89489111:TE'</b> <b>COM+98132333:TE'</b> <b>COM+86820700:TE'</b> <b>COM+98132333:TE'</b>			

<b>SG7 - C 5 - CUX.016</b>			
<b>CUX - M 1 - Currencies</b>			
<b>Function:</b> The CUX segment is <b>only</b> used if order amount is different form DKK (Danish kroner).			
<b>Segment number:</b> 016			
<b>Seg-/ element</b>	<b>Contents</b>	<b>Status/Rep. length</b>	<b>Codes / contents</b>
C504	CURRENCY DETAILS	C	
6347	Currency details qualifier	M an..3	<b>Code that qualifies the currency in DE 6345 as a reference currency</b> <b>2 = Reference currency</b>
6345	Currency, coded	C an..3	<b>Use ISO 4217 currency code, e.g.: 'DKK'</b>
6343	Currency qualifier	C an..3	<b>4 = Invoicing currency</b>
6348	Currency rate base	C n..4	<b>11 = Payment currency</b> ***
C504	CURRENCY DETAILS	C	
6347	Currency details qualifier	M an..3	<b>3 = Target currency</b> ***
6345	Currency, coded	C an..3	
6343	Currency qualifier	C an..3	<b>4 = Invoicing currency</b>
6348	Currency rate base	C n..4	<b>10 = Pricing currency</b> <b>11 = Payment currency</b> ***
5402	RATE OF EXCHANGE	C n..12	<b>'Current rate of exchange'</b>
6341	CURRENCY MARKET, CODED	C an..3	***
<b>Example: CUX+2:SKR++87,45'</b>			

<b>SG8 - C 10 - PAT.018</b>			
<b>PAT - M 1 - Payment terms basis</b>			
<b>Function:</b> The PAT- and the PCD- (no. 020) segment contain terms of payment, and cash allowance and penalty rates. These are <b>only</b> used when terms of payment deviate from standard terms.			
<b>Segment number:</b> 018			
<b>Seg-/element</b>	<b>Contents</b>	<b>Status/Rep. length</b>	<b>Codes / contents</b>
4279	PAYMENT TERMS TYPE QUALIFIER	M an..3	<b>1 = Usual terms</b> <b>7 = Extension</b> <b>18 = Previously agreed upon</b>
C110	PAYMENT TERMS	C	
4277	Terms of payment identification	M an..17	***
1131	Code list qualifier	C an..3	***
3055	Code list responsible agency, coded	C an..3	***
4276	Terms of payment	C an..35	***
4276	Terms of payment	C an..35	***
C112	TERMS/TIME INFORMATION	C	
2475	Payment time reference, coded	M an..3	<b>Code relating payment terms to the date of a specific event.</b> <b>5 = Date of invoice</b> <b>6 = Date of credit note</b>
2009	Time relation, coded	C an..3	<b>Code relating payment terms to a time before, on or after the reference date.</b> <b>3 = After reference</b> <b>6 = End of month</b>
2151	Type of period, coded	C an..3	<b>Agreed or specified period of time</b> <b>D = Day</b> <b>M = Month</b> <b>W = Week</b> <b>Y = Year</b>
2152	Number of periods	C n..3	<b>'Number'</b>
<b>Example: PAT+7++5:6:D:45' (extended term of delivery - current month + 45 days)</b>			

<b>SG8 - C 10 - PAT.018</b>			
<b>PCD - C 1 - Percentage details</b>			
<p><b>Function:</b>                  The PAT- and the PCD- (no. 018) segment contain terms of payment, and cash allowance and penalty rates. These are <b>only</b> used when terms of payment deviate from standard terms.</p> <p><b>Segment number:</b>                  020</p>			
<b>Seg-/ element</b>	<b>Contents</b>	<b>Status/Rep. length</b>	<b>Codes / contents</b>
C501	PERCENTAGE DETAILS	M	
5245	Percentage qualifier	M an..3	<b>12 = Cash allowance</b>
5482	Percentage	C n..10	<b>15 = Penalty percentage</b>
5249	Percentage basis, coded	C an..3	<b>Value expresses as a percentage of a specified amount</b>
1131	Code list qualifier	C an..3	***
3055	Code list responsible agency, coded	C an..3	***
<b>Example: PCD+12:4,25'</b>			

<b>SG9 - C 10 - TDT.022</b>			
<b>TDT - M 1 - Details of transport</b>			
<b>Function:</b> The TDT segment specifies the transport details such as mode and means of transport. This is <b>only</b> used if the mode of transport is different from the agreed mode of transport.			
<b>Segment number:</b> 022			
<b>Seg-/ element</b>	<b>Contents</b>	<b>Status/Rep. length</b>	<b>Codes / contents</b>
8051	TRANSPORT STAGE QUALIFIER	M an..3	<b>20 = Main transport</b>
8028	CONVEYANCE REFERENCE NUMBER	C an..17	***
C220	MODE OF TRANSPORT	C	
8067	Mode of transport, coded	C an..3	<b>20 = Rail</b> <b>30 = Road</b> <b>50 = Mail</b> <b>CE = Customer pickup</b> <b>D = Parcel post</b> <b>PC = Private carrier</b> <b>T = Best way</b> <b>ZVK = From work</b> <b># = See code list</b>
8066	Mode of transport	C an..17	***
C228	TRANSPORT MEANS	C	
8179	Type of means of transport identification	C an..8	***
8178	Type of means of transport	C an..17	***
C040	CARRIER	C	
3127	Carrier identification	C an..17	***
1131	Code list qualifier	C an..3	***
3055	Code list responsible agency, coded	C an..3	***
3128	Carrier name	C an..35	<b>'Carrier name'</b>
8101	TRANSIT DIRECTION, CODED	C an..3	***
C401	EXCESS TRANSPORTATION INFORMATION	C	
8457	Excess transportation reason, coded	M an..3	***
8459	Excess transportation responsibility, coded	M an..3	***
7130	Customer authorization number	C an..17	***
C222	TRANSPORT IDENTIFICATION	C	
8213	Id. of means of transport identification	C an..9	***
1131	Code list qualifier	C an..3	***
3055	Code list responsible agency, coded	C an..3	***
8212	Id. of means of transport	C an..35	***
8453	Nationality of means of transport, coded	C an..3	***
8281	TRANSPORT OWNERSHIP, CODED	C an..3	***

**Example: TDT+20++30++:::Danske Fragtmænd'**

<b>SG11 - C 5 - TOD.024</b>			
<b>TOD - M 1 - Terms of delivery or transport</b>			
<b>Function:</b> The TOD segment specifies terms of delivery and transport charges method of payment. The segment is <b>only</b> used if terms of delivery and transport charges deviate from previous agreements.			
<b>Segment number:</b> 024			
<b>Seg-/element</b>	<b>Contents</b>	<b>Status/Rep. length</b>	<b>Codes / contents</b>
4055	TERMS OF DELIVERY OR TRANSPORT FUNCTION, CODED	C an..3	<b>5 = Transport condition</b> # = See code list
4215	TRANSPORT CHARGES METHOD OF PAYMENT, CODED	C an..3	<b>CC = Buyer payment</b> # = See code list
C100	TERMS OF DELIVERY OR TRANSPORT	C	
4053	Terms of delivery or transport, coded	C an..3	# = See code list
1131	Code list qualifier	C an..3	***
3055	Code list responsible agency, coded	C an..3	***
4052	Terms of delivery or transport	C an..70	'text'
4052	Terms of delivery or transport	C an..70	'text'
<b>Example: TOD+5+CC'</b>			

**Detail section**

*In the detail section the LIN segment and one or several other segments must be repeated for each line item number.*

<b>SG25 - C 200.000 - LIN.039</b>			
<b>LIN - M 1 - Line item</b>			
<b>Function:</b> The LIN segment identifies a line item, EAN-item number and type.			
<b>Segment number:</b> 039			
<b>Seg-/ element</b>	<b>Contents</b>	<b>Status/Rep. length</b>	<b>Codes / contents</b>
1082	LINE ITEM NUMBER	C n..6	<b>'Running line item number'</b> <i>Recommended numbering: 1, 2, 3, 4, 5, .....</i>
1229	ACTION REQUEST/NOTIFICATION, CODED	C an..3	
C212	ITEM NUMBER IDENTIFICATION	C	
7140	Item number	C an..35	<b>'Item number'</b>
7143	Item number type, coded	C an..3	<b>EN = EAN item number</b>
1131	Code list qualifier	C an..3	***
3055	Code list responsible agency, coded	C an..3	***
C829	SUB-LINE INFORMATION	C	
5495	Sub-line indicator, coded	C an..3	***
1082	Line item number	C n..6	***
1222	CONFIGURATION LEVEL	C n..2	***
7083	CONFIGURATION, CODED	C an..3	***
<b>Example: LIN+1+5702425016943:EN'</b>			

<b>SG25 - C 200.000 - LIN.039</b>			
<b>PIA - C 25 - Additional product id</b>			
<b>Function:</b> PIA defines additional product id. As a minimum the manufacturer's article number should be stated.			
<b>Segment number:</b> 040			
<b>Seg-/element</b>	<b>Contents</b>	<b>Status/Rep. length</b>	<b>Codes / contents</b>
4347	PRODUCT ID. FUNCTION QUALIFIER	M an..3	<b>1 = Additional identification</b> <b>5 = Product identification</b>
C212	ITEM NUMBER IDENTIFICATION	M	
7140	Item number	C an..35	<b>Item number</b>
7143	Item number type, coded	C an..3	<b>MF = Manufacturer's article number</b>
1131	Code list qualifier	C an..3	<b>ZWN = Wholesaler's article number</b>
3055	Code list responsible agency, coded	C an..3	<b>HS = Harmonised system</b> ***
C212	ITEM NUMBER IDENTIFICATION	C	***
7140	Item number	C an..35	***
7143	Item number type, coded	C an..3	***
1131	Code list qualifier	C an..3	***
3055	Code list responsible agency, coded	C an..3	***
C212	ITEM NUMBER IDENTIFICATION	C	***
7140	Item number	C an..35	***
7143	Item number type, coded	C an..3	***
1131	Code list qualifier	C an..3	***
3055	Code list responsible agency, coded	C an..3	***
C212	ITEM NUMBER IDENTIFICATION	C	***
7140	Item number	C an..35	***
7143	Item number type, coded	C an..3	***
1131	Code list qualifier	C an..3	***
3055	Code list responsible agency, coded	C an..3	***
C212	ITEM NUMBER IDENTIFICATION	C	***
7140	Item number	C an..35	***
7143	Item number type, coded	C an..3	***
1131	Code list qualifier	C an..3	***
3055	Code list responsible agency, coded	C an..3	***

**Example: PIA+1+030H8908:MF'**

<b>SG25 - C 200.000 - LIN.039</b>			
<b>IMD - <u>C 99</u> - Item description</b>			
<b>Function:</b> The IMD-segment contains item text. This segment can <b>only</b> be recommended in special cases where the item number does not identify the item.			
<b>Segment number:</b> 041			
<b>Seg-/ element</b>	<b>Contents</b>	<b>Status/Rep. length</b>	<b>Codes / contents</b>
7077	ITEM DESCRIPTION TYPE, CODED	C an..3	<b>F = Text</b>
7081	ITEM CHARACTERISTIC, CODED	C an..3	***
C273	ITEM DESCRIPTION	C	
7009	Item description identification	<u>C an..17</u>	<u>CU = Consumer unit</u> <u>DU = Shipment unit</u> <u>RC = Returnable package</u> <u>SER = Service</u> <u>TU = Trade unit (EAN Code)</u> <u>VQ = Variable quantity</u>
1131	Code list qualifier	C an..3	***
3055	Code list responsible agency, coded	C an..3	***
7008	Item description	C an..35	<b>'Item text'</b>
7008	Item description	C an..35	<b>'Item text'</b>
3453	Language, coded	C an..3	***
7383	SURFACE/LAYER INDICATOR, CODED	C an..3	***
<b>Example: <i>IMD+F++TU:::This is an item text'</i></b>			

<b>SG25 - C 200.000 - LIN.039</b>			
<b>MEA - C 5 - Measurements</b>			
<b>Function:</b> MEA specifies physical measurements, including dimension tolerances, weights and counts.			
<b>Segment number:</b> 042			
<b>Seg-/ element</b>	<b>Contents</b>	<b>Status/Rep. length</b>	<b>Codes / contents</b>
6311	MEASUREMENT APPLICATION QUALIFIER	M an..3	<b>AAI = Item weight</b> <b>VOL = Volume</b>
C502	MEASUREMENTS DETAILS	C	
6313	Measurement dimension, coded	C an..3	<b>AAB = Unit gross weight</b> <b>GMC = Gross volume</b> <b># = See code list</b>
6321	Measurement significance, coded	C an..3	***
6155	Measurement attribute identification	C an..3	***
6154	Measurement attribute	C an..70	***
C174	VALUE/RANGE	C	
6411	Measure unit qualifier	M an..3	<b>KGM = Kilogram</b> <b>MTQ = Cubic metre</b> <b># = See code list</b> <b>'Value'</b>
6314	Measurement value	C n..18	***
6162	Range minimum	C n..18	***
6152	Range maximum	C n..18	***
6432	Significance digits	C n..2	***
7383	SURFACE/LAYER INDICATOR, CODED	C an..3	***
<b>Example: MEA+AAI+AAB+KGM:7'</b>			

<b>SG25 - C 200.000 - LIN.039</b>			
<b>QTY - C 10 - Quantity</b>			
<b>Function:</b> The QTY segment specifies ordered quantity/number and units. <b>Segment number:</b> 043			
<b>Seg-/element</b>	<b>Contents</b>	<b>Status/Rep. length</b>	<b>Codes / contents</b>
C186	QUANTITY DETAILS	M	
6063	Quantity qualifier	M an..3	<b>21 = Ordered quantity</b> <b>59 = Numbers of consumer units in the traded unit</b> <b>192 = Free goods quantity</b> # = See code list 'Number' <b>PCE = Piece</b> # = See code list
6060	Quantity	M n..15	
6411	Measure unit qualifier	C an..3	
<b>Example: QTY+21:500:PCE'</b>			

<b>SG25 - C 200.000 - LIN.039</b>			
<b>DTM - C 35 - Date/time/period</b>			
<b>Function:</b> The DTM segment is <b>only</b> used in the detail section if each line item number is to be delivered at another time than specified in the DTM segment in the heading section. <b>Segment number:</b> 044			
<b>Seg-/element</b>	<b>Contents</b>	<b>Status/Rep. length</b>	<b>Codes / contents</b>
C507	DATE/TIME/PERIOD	M	
2005	Date/time/period qualifier	M an..3	<b>2 = Delivery date/time, requested</b> <b>The value of a date in a specified representation</b> <b>102 = CCYYMMDD</b> <b>616 = CCYYWW</b>
2380	Date/time/period	C an..35	
2379	Date/time/period format qualifier	C an..3	
<b>Example: DTM+2:20000105:102'</b>			

<b>SG25 - C 200.000 - LIN.039</b>			
<b>MOA - C 10 - Monetary amount</b>			
<b>Function:</b> The MOA segment specifies total amount per line item number.			
<b>Segment number:</b> 045			
<b>Seg-/ element</b>	<b>Contents</b>	<b>Status/Rep. length</b>	<b>Codes / contents</b>
C516	MONETARY AMOUNT	M	
5025	Monetary amount type, qualifier	M an..3	<b>66 =Goods item total</b> <b># = See code list</b> <b>'Amount'</b>
5004	Monetary amount	C n..18	
6345	Currency, coded	C an..3	<u>Use ISO 4217 currency code, e.g.: 'DKK'</u>
6343	Currency qualifier	C an..3	<u>Use ISO 4217 currency code, e.g.: 'DKK'</u>
4405	Status, coded	C an..3	***
<b>Example: MOA+203:15050,00'</b>			

<b>SG25 - C 200.000 - LIN.039</b>			
<b>FTX - C 99 - Free text</b>			
<b>Function:</b> The FTX segment is <b>only</b> used in special cases to specify a text if the order requires special treatment at the recipient. Free text is difficult to handle electronically by the recipient.			
<b>Segment number:</b> 048			
<b>Seg-/ element</b>	<b>Contents</b>	<b>Status/Rep. length</b>	<b>Codes / contents</b>
4451	TEXT SUBJECT QUALIFIER	M an..3	<u>AAI = General information</u>
4453	TEXT FUNCTION, CODED	C an..3	***
C107	TEXT REFERENCE	C	
4441	Free text identification	M an..3	***
1131	Code list qualifier	C an..3	***
3055	Code list responsible agency, coded	C an..3	***
C108	TEXT LITERAL	C	
4440	Free text	M an..70	'Text'
4440	Free text	C an..70	'Text'
4440	Free text	C an..70	'Text'
4440	Free text	C an..70	'Text'
4440	Free text	C an..70	'Text'
3453	LANGUAGE, CODED	C an..3	
<b>Example: FTX+AAI+++ This is text number 1:This is text number 2'</b>			

<b>SG25 - C 200.000 - LIN.039</b>			
<b>SG29 - C 10 - RFF.051</b>			
<b>RFF - M 1 - Reference</b>			
<b>Function:</b> The RFF-segment specifies a reference that the sender wants to be returned in the order acknowledgement, the dispatch advice and the invoice. The segment is <b>only</b> used for electronic information and the max. number of times recommended is 2.			
<b>Segment number:</b> 051			
<b>Seg-/ element</b>	<b>Contents</b>	<b>Status/Rep. length</b>	<b>Codes / contents</b>
C506	REFERENCE	M	
1153	Reference qualifier	M an..3	<b>Code, that indicates, what the reference in DE 1154 states.</b>
1154	Reference number	C an..35	<b><u>CR = Customer reference number</u></b>
1156	Line number	C an..6	<b>'Reference to be returned'</b>
4000	Reference version number	C an..35	<b>***</b>
<b>Example: RFF+CR:999888'</b>			

<b>SG25 - C 200.000 - LIN 039</b>			
<b>SG30 - C 10 - PAC.053</b>			
<b>PAC - M 1 - Package</b>			
<b>Function:</b> The PAC segment specifies the number of physical dispatch units (pallets/cases/packages) and the physical type of packaging wanted by the buyer for each order line. This segment is <b>Only</b> to be used in case of deviations from the seller's usual dispatches.			
<b>Segment number:</b> 053			
<b>Seg-/element</b>	<b>Contents</b>	<b>Status/Rep. length</b>	<b>Codes / contents</b>
7224	NUMBER OF PACKAGES	C n..8	<b>'Number'</b>
C531	PACKAGING DETAILS	C	
7075	Packaging level, coded	C an..3	***
7233	Packaging related information, coded	C an..3	<b>52 = Package bar-coded UCC or EAN-128</b>
7073	Packaging terms and conditions, coded	C an..3	***
7073	Packaging terms and conditions, coded	C	***
C202	PACKAGE TYPE		
7065	Type of packages identification	C an..17	<b># = See code list</b>
1131	Code list qualifier	C an..3	***
3055	Code list responsible agency, coded	C an..3	***
7064	Type of packages	C an..35	<b>'text'</b>
C402	PACKAGE TYPE, IDENTIFICATION	C	
7077	Item description type, coded	M an..3	***
7064	Type of packages	M an..35	***
7143	Item number type, coded	C an..3	***
7064	Type of packages	C an..35	***
7143	Item number type, coded	C an..3	***
C532	RETURNABLE PACKAGE DETAILS	C	
8395	Returnable package freight payment responsibility, coded	C an..3	***
8393	Returnable package load contents, coded	C an..3	***
<b>Example: PAC+1++CT'</b>			

<b>SG25 - C 200.000 - LIN.039</b>			
<b>SG30 - C 10 - PAC.053</b>			
<b>SG32 - C 5 - PCI.054</b>			
<b>PCI - M 1 - Package identification</b>			
<b>Function:</b> The PCI segment specifies markings and/or labels used on individual physical units (packages) described in the PAC segment (no. 053). This is <b>only</b> to be used in case of special marking.			
<b>Segment number:</b> 054			
<b>Seg-/element</b>	<b>Contents</b>	<b>Status/Rep. length</b>	<b>Codes / contents</b>
4233	MARKING INSTRUCTIONS, CODED	C an..3	<b>28 = Free text</b>
C210	MARKS & LABELS	C	<b>States relevant marks and labels</b>
7102	Shipping marks	M an..35	<b>'text'</b>
7102	Shipping marks	C an..35	<b>'text'</b>
7102	Shipping marks	C an..35	<b>'text'</b>
7102	Shipping marks	C an..35	<b>'text'</b>
7102	Shipping marks	C an..35	<b>'text'</b>
7102	Shipping marks	C an..35	<b>'text'</b>
7102	Shipping marks	C an..35	<b>'text'</b>
7102	Shipping marks	C an..35	<b>'text'</b>
7102	Shipping marks	C an..35	<b>'text'</b>
8275	CONTAINER/PACKAGE STATUS, CODED	C an..3	<b>***</b>
C827	TYPE OF MARKING	C	
7511	Type of marking, coded	M an..3	<b>***</b>
1131	Code list qualifier	C an..3	<b>***</b>
3055	Code list responsible agency, coded	C an..3	<b>***</b>
<b>Example: PAC+1'PCI+28+to be delivered on the first floor to the right'</b>			

<b>SG25 - C 200.000 - LIN.039</b>			
<b>SG35 - C 99 - NAD.063</b>			
<b>NAD - M 1 - Name and address</b>			
<b>Function:</b>			
The NAD segment group is used in the detail section and <b>only</b> to specify - for each line number - any other delivery place than the one specified in the heading section.			
<b>Segment number:</b>			
063			
<b>Seg-/element</b>	<b>Contents</b>	<b>Status/Rep. length</b>	<b>Codes / contents</b>
3035	PARTY QUALIFIER	M an..3	<b>DP = Delivery party</b>
C082	PARTY IDENTIFICATION DETAILS	C	
3039	Party id. Identification	M an..35	***
1131	Code list qualifier	C an..3	***
3055	Code list responsible agency, coded	C an..3	***
C058	NAME AND ADDRESS	C	
3124	Name and address line	M an..35	***
3124	Name and address line	C an..35	***
3124	Name and address line	C an..35	***
3124	Name and address line	C an..35	***
3124	Name and address line	C an..35	***
C080	PARTY NAME	C	<b>Party name</b>
3036	Party name	M an..35	<b>Delivery party'</b>
3036	Party name	C an..35	<b>'text'</b>
3036	Party name	C an..35	<b>'text'</b>
3036	Party name	C an..35	<b>'text'</b>
3036	Party name	C an..35	<b>'text'</b>
3045	Party name format, coded	C an..3	***
C059	STREET	C	<b>Specification of street, number/p.o. box</b>
3042	Street and number/p.o. box	M an..35	
3042	Street and number/p.o. box	C an..35	
3042	Street and number/p.o. box	C an..35	***
3042	Street and number/p.o. box	C an..35	***
3164	CITY NAME	C an..35	<b>City name</b>
3229	COUNTRY SUB-ENTITY IDENTIFICATION	C an..9	***
3251	POST CODE IDENTIFICATION	C an..9	<b>Post code</b>
3207	COUNTRY, CODED	C an..3	***
<b>Example: NAD+DP+++Brødrene Dahl+Storegade 9+Nordby++2234'</b>			

<b>SG25 - C 200.000 - LIN.039</b>			
<b>SG35 - C 99 - NAD.063</b>			
<b>SG38 - C 5 - CTA.064</b>			
<b>CTA - M 1 - Contact information</b>			
<b>Function:</b> The CTA and COM (no. 065) segment in which a recipient, contact, department and telephone number may be specified may be added to the NAD (no. 063).			
<b>Segment number:</b> 064			
<b>Seg-/ element</b>	<b>Contents</b>	<b>Status/Rep. length</b>	<b>Codes / contents</b>
3139	CONTACT FUNCTION, CODED	C an..3	<b>GR = Goods receiving contact</b>
C056	DEPARTMENT OR EMPLOYEE DETAILS	C	
3413	Department or employee identification	C an..17 C an..35	<b>'Department number'</b>
3412	Department or employee		<b>'Name'</b>
<b>Example: CTA+GR+09:Hans Hansen'</b>			

<b>SG25 - C 200.000 - LIN.039</b>			
<b>SG35 - C 99 - NAD.063</b>			
<b>SG38 - C 5 - CTA.064</b>			
<b>COM - C 5 - Communication contact</b>			
<b>Function:</b> The CTA (no. 064) and COM segment in which a recipient, contact, department and telephone number may be specified may be added to the NAD (no. 063).			
<b>Segment number:</b> 065			
<b>Seg-/ element</b>	<b>Contents</b>	<b>Status/Rep. length</b>	<b>Codes / contents</b>
C076	COMMUNICATION CONTACT	M	
3148	Communication number	<b>M an..51</b>	<b>Information about e.g. telephone- or fax- number</b>
3155	Communication channel qualifier	M an..3	<b>TE = Telephone</b> <b>FX = fax</b> <b>EM = Electronic mail</b>
<b>Example: COM+42450145:TE'</b>			

## Summary section

<b>UNS - M 1 - Section control</b>			
<b>Function:</b> The UNS segment separates the summary section from the detail section.			
<b>Segment number:</b> 080			
<b>Seg-/ element</b>	<b>Contents</b>	<b>Status/Rep. length</b>	<b>Codes / contents</b>
0081	SECTION ID	M a1	<b>S = Separator between detail and summary section</b>
<b>Example: UNS+S'</b>			

<b>MOA - C 12 - Monetary amount</b>			
<b>Function:</b> The MOA segment specifies the total amount per message. The amount is the sum of the line item total amount in the MOA segment.			
<b>Segment number:</b> 081			
<b>Seg-/ element</b>	<b>Contents</b>	<b>Status/Rep. length</b>	<b>Codes / contents</b>
C516	MONETARY AMOUNT	M	
5025	Monetary amount type qualifier	M an..3	<b>Code that indicates what the amount in DE 5004 states</b> <b>79 = Total line items amount</b> <b># See code list</b> <b>Specification of amount qualified in DE 5025</b>
5004	Monetary amount	C n..18	<b>Use ISO 4217 currency code, e.g.: 'DKK'</b>
6345	Currency, coded	C an..3	<b>Use ISO 4217 currency code, e.g.: 'DKK'</b>
6343	Currency qualifier	C an..3	<b>Use ISO 4217 currency code, e.g.: 'DKK'</b>
4405	Status, coded	C an..3	<b>***</b>
<b>Example: MOA+79:61453,00'</b>			

<b>UNT - M 1 - The ending of message</b>			
<b>Function:</b> The UNT segment ends the message and the UNZ ends the dispatch.			
<b>Segment number:</b> 083			
<b>Seg-/ element</b>	<b>Contents</b>	<b>Status/Rep. length</b>	<b>Codes / contents</b>
0074	NUMBER OF SEGMENTS IN THE MESSAGE	M n..6	<i>Number of segments used in the message</i>
0062	MESSAGE REFERENCE NUMBER	M an..14	<i>'Same as UNH'</i>
<b>UNZ - M 1 - The ending of dispatch</b>			
0036	DISPATCH CONTROL COUNTING	M n..6	<i>'Number of messages'</i>
0020	DISPATCH CONTROL REF.	M an..14	<i>'Same as UNB'</i>
<b>Example:</b> <i>UNT+39+12345'</i> <i>UNZ+40+ORDRE999999'</i>			

**Example of order****Order**

① ②

<b>Køber:</b> Sanistål A/S Aalborg Hans Jensen ⑨ Tlf.: 98132333 ⑩ <b>EAN/EDI-lokationsnr.:</b> ⑧ 5790000010622	<b>Sælger:</b> Danfoss A/S Salg Danmark Søren Hansen ⑥ Tlf.: 89489111 ⑦ <b>EAN/EDI-lokationsnr.:</b> ⑤ 5790000013340	<b>Dokumentnummer:</b> ② S75113 <b>Dokumentdato:</b> 01-10-2000 <b>Leveringsdato:</b> ④ 14-02-2000
<b>Transportmåde:</b> Fragtmænd ⑬ <b>Fragtfører:</b> Danske Fragtmænd ⑭	<b>Leveringssted:</b> Sanistål A/S ⑪ Bøvehøjvej 2-14 8600 Silkeborg ⑫ Jesper Rasmussen ⑬ Tlf.: 86820700 <b>EAN/EDI-lokationsnr.:</b>	<b>Fakturaadresse:</b> Sanistål A/S ⑭ Aalborg Tlf.: 98132333 ⑮ <b>EAN/EDI-lokationsnr.:</b>

EAN-varenr.	Tekst	Kvantum	Fabvarenr.	Total beløb
⑰ 5702525016943	0 50 USG 80H Olieadvse	⑱ 500	03H08908	⑲ 15050 00
⑳ 5702425017155	1 00 USG 80H Olieadvse	㉑ 500	030H8920	㉒ 15050 00
㉓ 5702420003023	RA/VP Zoneform Inkl box	㉔ 72	013G2941	㉕ 13860 00
㉖ 5702420004730	RA-K Ventilhus	㉗ 245	030G3244	㉘ 17493 00

<b>Total ordrebælb</b>
㉙ 61453 00

**Example of EDIFACT for DAVID order**

Ref. No.	EDI-string	Explanation	Information from...
	<b>HEADING SECTION</b>		
1	UNH+12345+ORDERS:D:96A:UN:DAV050'	Identification of order	
2	BGM+220+S75113++AC'	Order and document number, and request for acknowledgement of order	
3		Document date. Document date is the same as the date of the UNB-segment	
4	DTM+2:20000114:102'	Date of delivery desired	
	RFF+CR:974711-CBA/Z'	Electronic reference	
5	NAD+SE+5790000013340'	The EAN lokation number of the supplier	
6	CTA+PD+:Søren Hansen'	The supplier's contact person concerning the delivery	
7	COM+89489111:TE'	Seller's telephonenumber	
8	NAD+BY+5790000010622'	The EAN location number of the customer	
9	CTA+PD+04:Hans Jensen'	The customer's contact person concerning the delivery	
10	COM+98132333:TE'	Buyer's telephonenumber	
11	NAD+DP+++Sanistål A/S+Bavnehøjvej 2-14+Silkeborg++8600'	Delivery address	
12	CTA+GR+11:Jesper Rasmussen'	Contact person at receipt of goods	
13	COM+86820700:TE'	Telephone number of the delivery address	
14	NAD+IV+++Sanistål A/S++Ålborg'	Invoice address	
15	COM+98132333:TE'	Telephone number of the invoice address	
16	TDT+20++30++:::Danske Fragtmænd'	Mode of transport and transport company	
	<b>DETAILSEKTION</b>		
17	LIN+1++5702425016943:EN'	1 <sup>st</sup> item line, EAN article number	Base
	PIA+1+03H08908:MF'	Additional product id, manufacturer's article number	
18	QTY+21:500:PCE'	Quantity ordered is 500 pieces	
19	MOA+203:15050,00'	Total amount of item line excl. VAT	
	RFF+CR:974351-CBA/Z'	Electronic reference	
20	LIN+2++5702425017155:EN'	2 <sup>nd</sup> item line, EAN article number	Base
	PIA+1+030H8920:MF'	Additional product id, manufacturer's article number	
21	QTY+21:500:PCE'	Quantity ordered is 500 pieces	
22	MOA+203:15050,00'	Total amount of item line excl. VAT	
	RFF+CR:974352-CBA/Z'	Electronic reference	
23	LIN+3++5702420003023:EN'	3 <sup>rd</sup> item line, EAN article number	Base
	PIA+1+013G2941:MF'	Additional product id, manufacturer's article number	
24	QTY+21:72:PCE'	Quantity ordered is 72 pieces	
25	MOA+203:13860,00'	Total amount of item line excl. VAT	
	RFF+CR:974782-CBA/Z'	Electronic reference	
26	LIN+4++5702420004730:EN'	4 <sup>th</sup> item line, EAN article number	Base
	PIA+1+030G3244:MF'	Additional product id, manufacturer's article number	
27	QTY+21:245:PCE'	Quantity ordered is 245 pieces	
28	MOA+203:17493,00'	Total amount of item line excl. VAT	

**Continue...**

Ref. No.	EDI-string	Explanation	Information from...
	RFF+CR:974512-CBA/Z'	Electronic reference	
	<b>SUMSEKTION</b>		
	UNS+S'		
29	MOA+79:61453,00'	Total amount of the whole order	
	UNT+39+12345'		

The UNB and UNZ segments are not included.

When the segments in a message are sent, they are not to be separated by blank characters. The segments are sent as one block where each line normally consists of 80 characters.

```
UNH+12345+ORDERS:D:96A:UN:DAV050'BGM+220+S75113++AC'DTM+2:20000114:102'RFF+CR:97
4711-CBA/Z'NAD+SE+5790000013340'CTA+PD+:Søren Hansen'COM+89489111:TE'NAD+BY+5790
000010622'CTA+PD+04:Hans Jensen'COM+98132333:TE'NAD+DP+++Sanistål A/S+Bavnehøjve
j 2-14+Silkeborg++8600'CTA+GR+11:Jesper Rasmussen'COM+86820700:TE'NAD+IV+++Sanis
tål A/S++Ålborg'COM+98132333:TE'TDT+20++30++:::Danske Fragtmænd'LIN+1++570242501
6943:EN'PIA+1+03H8908:MF'QTY+21:500:PCE'MOA+203:15050,00'RFF+CR:974351-CBA/Z'LIN
+2++5702425017155:EN'PIA+1+030H8920:MF'QTY+21:500:PCE'MOA+203:15050,00'RFF+CR:97
4352-CBA/Z'LIN+3++5702420003023:EN'PIA+1+013G2941:MF'QTY+21:72:PCE'MOA+203:13860
,00'RFF+CR:974782-CBA/Z'LIN+4++5702420004730:EN'PIA+1+030G3244:MF'QTY+21:245:PCE
'MOA+203:17493,00'RFF+CR:974512-CBA/Z'UNS+S'MOA+79:61453,00'UNT+39+12345'
```

