

Paragraph 5

Order confirmation

EDIFACT Order confirmation

The definition of the application of the international (UN) EDIFACT order confirmation is as follows:

Functional description

A message from seller to buyer in response to an order or to buyer's change of order.

Principals

An order confirmation may contain several items or services.

Response/confirmation to an order confirmation or to buyer's change of an order can be given as:

- a confirmation stating that the order is received and understood
- a confirmation to an order
- a notification that the order or parts of the order cannot be executed.

An order confirmation/response may contain items or services referring to one or several delivery schedules, renouncements etc.

An order confirmation/response concerning commerce across borders may contain information on tariffs of fiscal issues and/or of statistical purposes.

An order confirmation/response may contain information on transport, delivery place and time(s).

VVS EDIFACT Guideline

In the Guideline, the EDIFACT message for the order confirmation is used for the following transactions:

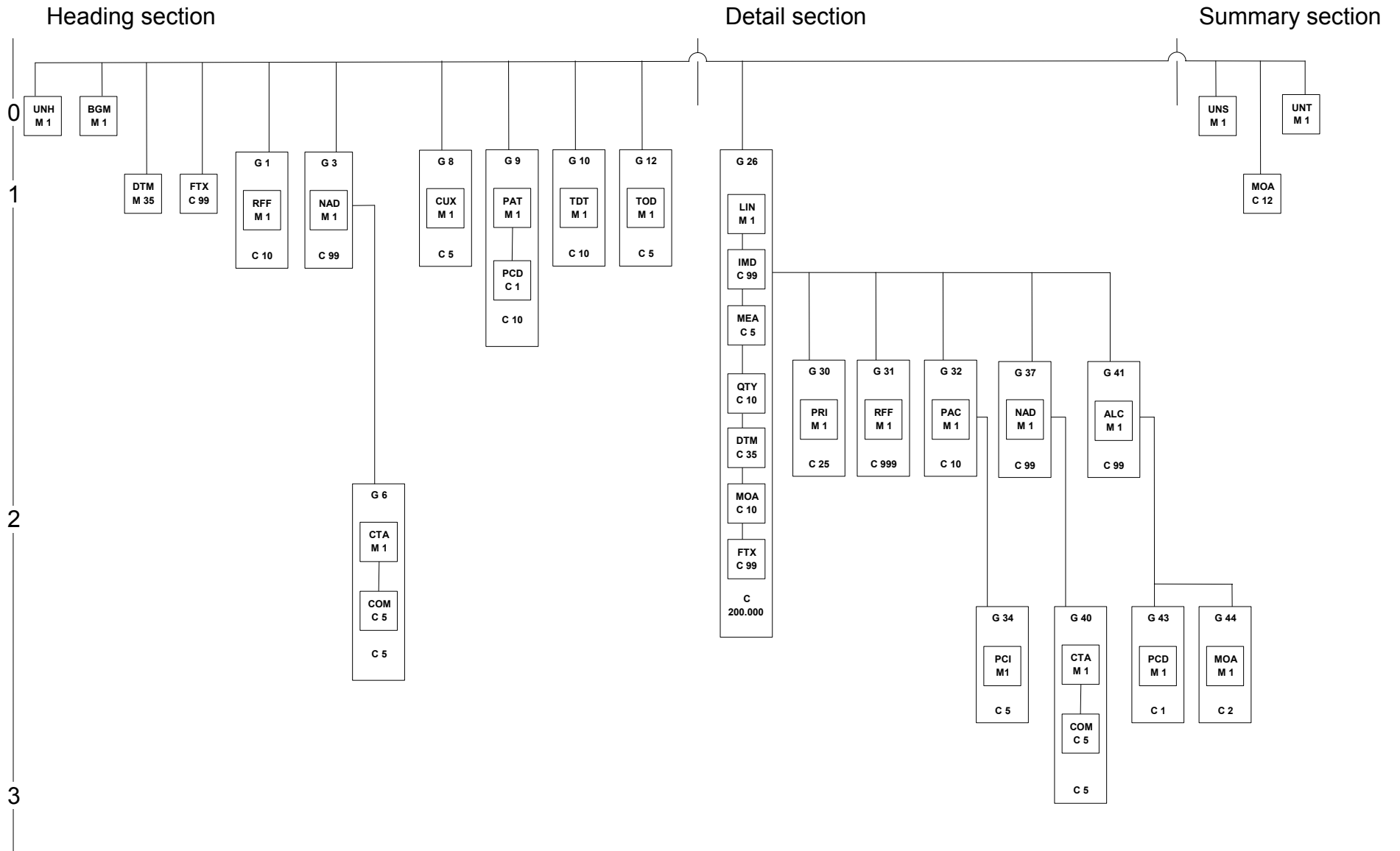
Order confirmation

In the order confirmation, the seller specifies information about the receipt and/or acceptance of an order. The order confirmation may contain further information on e.g. delivery date, the seller's item number, and contacts. However, this information must not change the contents of the order.

An order confirmation is only to refer to one order.

If dates of delivery or quantities are changed after the order confirmation has been sent, a new order confirmation must be forwarded to change these facts at the customer.

Definition of DAVID order confirmation



Heading section

UNA/UNB			
<p>The UNA and UNB segments begin a dispatch and may be regarded as the envelope of the dispatch. The UNB segment is used by the recipient EDI-system to recognise the sender and the recipient.</p> <p>The UNB segment contains the EAN-location numbers of the buyer/sender and the seller/recipient. Identifications are only indicated in the UNB-segment.</p>			
Seg-/ element	Contents	Status/Rep. length	Codes / contents
UNA	Definition of control character	C 1/a3	UNA:+,? '
UNB	Beginning of message	M 1/a3	UNB
S001	SYNTAX ID	M	
0001	Syntax rule, id	M a4	UNOC = UN/ECE level C (as defined in ISO 646)
0002	Syntax, version number	M n1	3 = Syntax version number 3 (refers to the use of all valid codes in DE 0001)
S002	SENDER	M	
0004	Sender id	M an..35	'EAN-location number'
0007	Partner id qualifier	C an..4	14 = EAN International
0008	Attention specified by sender	C an..14	***
S003	RECIPIENT	M	
0010	Recipient id	M an..35	'EAN-location number'
0007	Partner id qualifier	C an..4	14 = EAN International
0014	Attention specified by recipient	C an..14	***
S004	DISPATCH, TIME	M	
0017	Dispatch, date	M n6	YYMMDD
0019	Dispatch hour	M n4	HHMM
0020	DISPATCH, REFERENCE	M an..14	'Unique reference'
S005	RECIPIENT'S REF. PASSWORD	C	
0022	Recipient's ref./password	M an..14	***
0025	Recipient's ref./password qualifier	C an2	***
0026	APPLICATION REF.	C an..14	***
0029	PROCESSING PRIORITY CODE	C a1	***
0031	ACKNOWLEDGEMENT REQUEST	C n1 C an..35	1 = Acknowledgement request
0032	AGREEMENT, ID		
0035	TEST INDICATOR	C n1	1 = Test
Example:			
UNA:+,?'			
UNB+UNOC:3+5790000001999:14+5790000001998:14+930501:1215+ORDERSP999999++++1+D AVID+1'			

UNH - M 1 - Message - start			
Function: The UNH is sent once per document in one dispatch that specifies which message is sent, as well as the version number and code for the dispatch co-operation.			
Segment number: 001			
Seg-/element	Contents	Status/Reg. length	Codes / contents
0062	MESSAGE REFERENCE NUMBER	M an..14	Specifies a unique reference for the message
S009	MESSAGE ID	M	
0065	Message type	M an..6	ORDERS
0052	Message, version number	M an..3	D
0054	Message, edition number	M an..3	96A
0051	Publisher	M an..2	UN = United Nations Standard Message (UNSM)
0057	Code for dispatch co-operation	C an..6	DAV050 EAN008 = EAN version control number
0068	COMMON SUBJECT REFERENCE	C an..35	***
S010	STATUS OF TRANSFERS	C	
0070	Sequence of transfers	M n..2	***
0073	First/last transfer	C a1	***
Example: UNH+12345+ORDERSP:D:96A:UN:DAV050'			

BGM - M 1 - Beginning of message			
Function: The BGM segment starts the message order confirmation.			
Segment number: 002			
Seg-/ element	Contents	Status/Rep. length	Codes / contents
C002	DOCUMENT/MESSAGE NAME	C	
1001	Document/message name, coded	C an..3	<u>231 = Order confirmation</u>
1131	Code list qualifier	C an..3	***
3055	Code list responsible agency, coded	C an..3	***
1000	Document/message name	C an..35	***
1004	DOCUMENT/MESSAGE NUMBER	C an..35	'Supplier's order confirmation number' ***
1225	MESSAGE FUNCTION, CODED	C an..3	
4343	RESPONSE TYPE, CODED	C an..3	***
Example: BGM+231+S75113-B'			

DTM - M 35 - Date/time/period			
Function: The DTM segment specifies 'Scheduled dispatch time' / 'Scheduled time of arrival' for the entire order.			
Segment number: 003			
Seg-/ element	Contents	Status/Rep. length	Codes / contents
C507	DATE/TIME/PERIOD	M	
2005	Date/time/period, qualifier	M an..3	Code that indicates what date/time in DE 2380 states 35 = Delivery date/time, actual 189 = Departure date/time, scheduled Specification of date in the format specified in DE 2379 102 = CCYYMMDD 616 = CCYYWW
2380	Date/time/period	C an..35	
2379	Date/time/period format qualifier	C an..3	
Example: DTM+189:2000114:102'			

FTX - C 99 - Free text			
Function: The FTX segment is only used in special cases to indicate a text that causes special treatment of the order confirmation by the recipient. Free form text is difficult to treat electronically by the recipient.			
Segment number: 006			
Seg-/ element	Contents	Status/Rep. length	Codes / contents
4451	TEXT SUBJECT QUALIFIER	M an..3	AAI = General information ***
4453	TEXT FUNCTION, CODED	C an..3	
C107	TEXT REFERENCE	C	
4441	Free text identification	M an..3	***
1131	Code list qualifier	C an..3	***
3055	Code list responsible agency, coded	C an..3	***
C108	TEXT LITERAL	C	
4440	Free text	M an..70	'Text'
4440	Free text	C an..70	'Text'
4440	Free text	C an..70	'Text'
4440	Free text	C an..70	'Text'
4440	Free text	C an..70	'Text'
3453	LANGUAGE, CODED	C an..3	
Example: FTX+AAI+++This is text number 1:This is text number 2'			

SG1 - C 10 - RFF .007			
RFF - M 1 - Reference			
Function: The RFF segment specifies various references that the sender wants to be returned in the order confirmation. The reference is valid for the entire order confirmation. It is recommended not to use the segment more than twice.			
Segment number: 007			
Seg-/ element	Contents	Status/Rep. length	Codes / contents
C506	REFERENCE	M	
1153	Reference qualifier	M an..3	Code that indicates what the reference in DE 1154 states. CR = Customer reference number VN = Order number (vendor) IV = Invoice number
1154	Reference number	C an..35	'Reference to be returned'
1156	Line number	C an..6	***
4000	Reference version number	C an..35	***
Example: RFF+CR:974711-CBA/Z'			

SG3 - C 99 - NAD.009			
NAD - M 1 - Name and address			
Function: The NAD segment specifies buyer, seller, producer, and delivery place for the entire message (UNH) and invoice address. By means of the code 'DP' or 'IV' in element 3035 place may be specified by full name and address.			
Segment number: 009			
Seg-/element	Contents	Status/Rep. length	Codes / contents
3035	PARTY QUALIFIER	M an..3	Code that indicates which function the party (the location) has BY = Buyer SE = Seller SU = Supplier MF = Manufacturer of goods DP = Delivery party IV = Invoicee
C082	PARTY IDENTIFICATION DETAILS	C	
3039	Party id. Identification	M an..35	EAN location number (n13) ***
1131	Code list qualifier	C an..3	
3055	Code list responsible agency, coded	C an..3	9 = EAN
C058	NAME AND ADDRESS	C	
3124	Name and address line	M an..35	***
3124	Name and address line	C an..35	***
3124	Name and address line	C an..35	***
3124	Name and address line	C an..35	***
3124	Name and address line	C an..35	***
C080	PARTY NAME	C	Must only be filled in when DE 3035 is equal to 'DP' or 'IV'
3036	Party name	M an..35	
3036	Party name	C an..35	
3036	Party name	C an..35	***
3036	Party name	C an..35	***
3036	Party name	C an..35	***
3045	Party name format, coded	C an..3	***
C059	STREET	C	Specification of street, number/p.o. box
3042	Street and number/p.o. box	M an..35	
3042	Street and number/p.o. box	C an..35	
3042	Street and number/p.o. box	C an..35	***
3042	Street and number/p.o. box	C an..35	***
3164	CITY NAME	C an..35	City name
3229	COUNTRY SUB-ENTITY IDENTIFICATION	C an..9	***
3251	POST CODE IDENTIFICATION	C an..9	Post code
3207	COUNTRY, CODED	C an..3	***

Continue...

Example:**NAD+SE+5790000013340'****NAD+BY+5790000010622'****NAD+DP+++Sanistål A/S+Baunehøjvej 1-14+Silkeborg++8600'****NAD+IV+++Sanistål A/S++Ålborg'****SG3 - C 99 - NAD.009****SG6 - C 5 - CTA.012****CTA - M 1 - Contact information****Function:**

The CTA and COM (no. 013), in which order contact and department number as well as telephone number may be specified may be added to the NAD segment (no. 009).

Segment number:

012

Seg-/ element	Contents	Status/Rep. length	Codes / contents
3139	CONTACT FUNCTION, CODED	C an..3	Code specifying the function of a contact GR = Goods receiving contact PD = Purchasing contact
C056	DEPARTMENT OR EMPLOYEE DETAILS	C	
3413	Department or employee identification	C an..17	'Department number'
3412	Department or employee	C an..35	'Name'

Example:**CTA+PD+:Søren Hansen'****CTA+PD+04:Hans Jensen'****CTA+GR+11:Jesper Jensen'**

SG3 - C 99 - NAD.009			
SG6 - C 5 - CTA.012			
COM - C 5 - Communications contact			
Function: The CTA (no. 012) and COM, in which order contact and department number as well as telephone number may be specified may be added to the NAD segment (no. 009).			
Segment number: 013			
Seg-/ element	Contents	Status/Rep. length	Codes / contents
C076	COMMUNICATION CONTACT	M	
3148	Communication number	M an..51	Information about e.g. telephone- or fax- number <i>TE = Telephone</i> <i>FX = fax</i> EM = Electronic mail
3155	Communication channel qualifier	M an..3	
Example: <i>COM+89489111:TE'</i> <i>COM+98132333:TE'</i> <i>COM+86820700:TE'</i> <i>COM+98132333:TE'</i>			

SG8 - C 5 - CUX.016			
CUX - M 1 - Currencies			
Function: The CUX segment is only used if order amount is different from DKK (Danish kroner).			
Segment number: 016			
Seg-/ element	Contents	Status/Rep. length	Codes / contents
C504	CURRENCY DETAILS	C	
6347	Currency details qualifier	M an..3	Code that qualifies the currency in DE 6345 as a reference currency 2 = Reference currency
6345	Currency, coded	C an..3	Use ISO 4217 currency code, e.g.: 'DKK'
6343	Currency qualifier	C an..3	4 = Invoicing currency
6348	Currency rate base	C n..4	11 = Payment currency ***
C504	CURRENCY DETAILS	C	
6347	Currency details qualifier	M an..3	3 = Target currency ***
6345	Currency, coded	C an..3	
6343	Currency qualifier	C an..3	4 = Invoicing currency
6348	Currency rate base	C n..4	10 = Pricing currency 11 = Payment currency ***
5402	RATE OF EXCHANGE	C n..12	'Current rate of exchange'
6341	CURRENCY MARKET, CODED	C an..3	***
Example: CUX+2:SKR++87,45'			

SG9 - C 10 - PAT.018			
PAT - M 1 - Payment terms basis			
Function: The PAT- and the PCD- (no. 020) segment contain terms of payment and cash allowance and penalty rates. The segment is only used when terms of payment deviate from usual terms.			
Segment number: 018			
Seg-/element	Contents	Status/Rep. length	Codes / contents
4279	PAYMENT TERMS TYPE QUALIFIER	M an..3	1 = Usual terms 7 = Extension 18 = Previously agreed upon
C110	PAYMENT TERMS	C	
4277	Terms of payment identification	M an..17	***
1131	Code list qualifier	C an..3	***
3055	Code list responsible agency, coded	C an..3	***
4276	Terms of payment	C an..35	***
4276	Terms of payment	C an..35	***
C112	TERMS/TIME INFORMATION	C	
2475	Payment time reference, coded	M an..3	Code relating payment terms to the date of a specific event. 5 = Date of invoice 6 = Date of credit note
2009	Time relation, coded	C an..3	Code relating payment terms to a time before, on or after the reference date. 3 = After reference 6 = End of month
2151	Type of period, coded	C an..3	Agreed or specified period of time D = Day M = Month W = Week Y = Year
2152	Number of periods	C n..3	'Number'
Example: PAT+7++5:6:D:45' (Extended term of payment - current month + 45 days)			

SG9 - C 10 - PAT.018			
PCD - C 1 - Percentage details			
<p>Function: The PAT- and the PCD- (no. 018) segment contain terms of payment and cash allowance and penalty rates. This is only used when terms of payment deviate from usual terms.</p> <p>Segment number: 020</p>			
Seg-/ element	Contents	Status/Rep. length	Codes / contents
C501	PERCENTAGE DETAILS	M	
5245	Percentage qualifier	M an..3	12 = Cash allowance
5482	Percentage	C n..10	15 = Penalty percentage
5249	Percentage basis, coded	C an..3	Value expresses as a percentage of a specified amount
1131	Code list qualifier	C an..3	***
3055	Code list responsible agency, coded	C an..3	***
Example: PCD+12:4,25'			

SG10 - C 10 - TDT.022			
TDT - M 1 - Details of transport			
Function:			
The TDT segment specifies the transport details such as mode and means of transport. This is only used if the mode of transport is different from the agreed mode of transport.			
Segment number:			
022			
Seg-/ element	Contents	Status/Rep. length	Codes / contents
8051	TRANSPORT STAGE QUALIFIER	M an..3	20 = Main transport
8028	CONVEYANCE REFERENCE NUMBER	C an..17	***
C220	MODE OF TRANSPORT	C	
8067	Mode of transport, coded	C an..3	20 = Rail 30 = Road 50 = Mail CE = Customer pickup D = Parcel post PC = Private carrier T = Best way ZVK = From work # = See code list
8066	Mode of transport	C an..17	***
C228	TRANSPORT MEANS	C	
8179	Type of means of transport identification	C an..8	***
8178	Type of means of transport	C an..17	***
C040	CARRIER	C	
3127	Carrier identification	C an..17	***
1131	Code list qualifier	C an..3	***
3055	Code list responsible agency, coded	C an..3	***
3128	Carrier name	C an..35	'Carrier name'
8101	TRANSIT DIRECTION, CODED	C an..3	***
C401	EXCESS TRANSPORTATION INFORMATION	C	
8457	Excess transportation reason, coded	M an..3	***
8459	Excess transportation responsibility, coded	M an..3	***
7130	Customer authorization number	C an..17	***
C222	TRANSPORT IDENTIFICATION	C	
8213	Id. of means of transport identification	C an..9	***
1131	Code list qualifier	C an..3	***
3055	Code list responsible agency, coded	C an..3	***
8212	Id. of means of transport	C an..35	***
8453	Nationality of means of transport, coded	C an..3	***
8281	TRANSPORT OWNERSHIP, CODED	C an..3	***

Example: TDT+20++30++:::Danske Fragtmand'

SG12 - C 5 - TOD.024			
TOD - M 1 - Terms of delivery or transport			
Function: The TOD segment specifies terms of delivery transport charges and method of payment. This is only to be used if there are deviations from previously agreed terms of delivery and transport payment.			
Segment number: 024			
Seg-/element	Contents	Status/Rep. length	Codes / contents
4055	TERMS OF DELIVERY OR TRANSPORT FUNCTION, CODED	C an..3	5 = Transport condition # = See code list
4215	TRANSPORT CHARGES METHOD OF PAYMENT, CODED	C an..3	CC = Buyer payment # = See code list
C100	TERMS OF DELIVERY OR TRANSPORT	C	
4053	Terms of delivery or transport, coded	C an..3	# = See code list
1131	Code list qualifier	C an..3	***
3055	Code list responsible agency, coded	C an..3	***
4052	Terms of delivery or transport	C an..70	'text'
4052	Terms of delivery or transport	C an..70	'text'
Example: TOD+5+CC'			

Detail section

In the detail section the, LIN segment and one or several other segments must be repeated for each line item number.

SG26 - C 200.000 - LIN.039			
LIN - M 1 - Line item			
Function: The LIN segment identifies a line item, EAN-item number and type.			
Segment number: 039			
Seg-/ element	Contents	Status/Rep. length	Codes / contents
1082	LINE ITEM NUMBER	C n..6	'Running line item number' Recommended numbering: 1, 2, 3, 4, 5,
1229	ACTION REQUEST/NOTIFICATION, CODED	C an..3	
C212	ITEM NUMBER IDENTIFICATION	C	
7140	Item number	C an..35	'Item number'
7143	Item number type, coded	C an..3	EN = EAN item number
1131	Code list qualifier	C an..3	***
3055	Code list responsible agency, coded	C an..3	***
C829	SUB-LINE INFORMATION	C	
5495	Sub-line indicator, coded	C an..3	***
1082	Line item number	C n..6	***
1222	CONFIGURATION LEVEL	C n..2	***
7083	CONFIGURATION, CODED	C an..3	***
Example: LIN+1++5702425016943:EN'			

SG26 - C 200.000 - LIN.039			
PIA - C 25 - Additional product id			
Function: PIA defines additional product id. As a minimum the manufacturer's article number should be stated.			
Segment number: 040			
Seg-/ element	Contents	Status/Rep. length	Codes / contents
4347	PRODUCT ID. FUNCTION QUALIFIER	M an..3	1 = Additional identification 5 = Product identification
C212	ITEM NUMBER IDENTIFICATION	M	
7140	Item number	C an..35	Item number
7143	Item number type, coded	C an..3	MF = Manufacturer's article number
1131	Code list qualifier	C an..3	ZWN = Wholesaler's article number
3055	Code list responsible agency, coded	C an..3	HS = Harmonised system ***
C212	ITEM NUMBER IDENTIFICATION	C	***
7140	Item number	C an..35	***
7143	Item number type, coded	C an..3	***
1131	Code list qualifier	C an..3	***
3055	Code list responsible agency, coded	C an..3	***
C212	ITEM NUMBER IDENTIFICATION	C	***
7140	Item number	C an..35	***
7143	Item number type, coded	C an..3	***
1131	Code list qualifier	C an..3	***
3055	Code list responsible agency, coded	C an..3	***
C212	ITEM NUMBER IDENTIFICATION	C	***
7140	Item number	C an..35	***
7143	Item number type, coded	C an..3	***
1131	Code list qualifier	C an..3	***
3055	Code list responsible agency, coded	C an..3	***
C212	ITEM NUMBER IDENTIFICATION	C	***
7140	Item number	C an..35	***
7143	Item number type, coded	C an..3	***
1131	Code list qualifier	C an..3	***
3055	Code list responsible agency, coded	C an..3	***

Example: PIA+1+030H8908:MF'

SG26 - C 200.000 - LIN.039			
IMD - C 99 - Item description			
Function: The IMD-segment contains item text. This can only be recommended in special cases where the item number does not identify the item.			
Segment number: 041			
Seg-/ element	Contents	Status/Rep. length	Codes / contents
7077	ITEM DESCRIPTION TYPE, CODED	C an..3	F = Text
7081	ITEM CHARACTERISTIC, CODED	C an..3	***
C273	ITEM DESCRIPTION	C	
7009	Item description identification	C an..17	CU = Consumer unit DU = Shipment unit RC = Returnable package SER = Service TU = Trade unit (EAN Code) VQ = Variable quantity
1131	Code list qualifier	C an..3	***
3055	Code list responsible agency, coded	C an..3	***
7008	Item description	C an..35	'Item text'
7008	Item description	C an..35	'Item text'
3453	Language, coded	C an..3	***
7383	SURFACE/LAYER INDICATOR, CODED	C an..3	***
Example: <i>IMD+F++TU::This is an item text'</i>			

SG26 - C 200.000 - LIN.039			
MEA - C 5 - Measurements			
Function: MEA specifies physical measurements, including dimension tolerances, weights and counts.			
Segment number: 042			
Seg-/ element	Contents	Status/Rep. length	Codes / contents
6311	MEASUREMENT APPLICATION QUALIFIER	M an..3	AAI = Item weight VOL = Volume
C502	MEASUREMENTS DETAILS	C	
6313	Measurement dimension, coded	C an..3	AAB = Unit gross weight GMC = Gross volume # = See code list
6321	Measurement significance, coded	C an..3	***
6155	Measurement attribute identification	C an..3	***
6154	Measurement attribute	C an..70	***
C174	VALUE/RANGE	C	
6411	Measure unit qualifier	M an..3	KGM = Kilogram MTQ = Cubic metre # = See code list
6314	Measurement value	C n..18	'Value'
6162	Range minimum	C n..18	***
6152	Range maximum	C n..18	***
6432	Significance digits	C n..2	***
7383	SURFACE/LAYER INDICATOR, CODED	C an..3	***
Example: MEA+AAI+AAB+KGM:7'			

SG26 - C 200.000 - LIN.039			
QTY - C 10 - Quantity			
Function: The QTY segment specifies ordered quantity/number and unit and any outstanding quantity.			
Segment number: 043			
Seg-/ element	Contents	Status/Rep. length	Codes / contents
C186	QUANTITY DETAILS	M	
6063	Quantity qualifier	M an..3	113 = Quantity to be delivered
6060	Quantity	M n..15	73 = Outstanding quantity
6411	Measure unit qualifier	C an..3	'Number'
			PCE = Piece
			# = See code list
Example: QTY+113:500:PCE'			

SG26 - C 200.000 - LIN.039			
DTM - C 35 - Date/time/period			
Function: The DTM segment is only used in the detail section if a single item line will be delivered at another time than specified in the DTM segment in the heading section.			
Segment number: 044			
Seg-/ element	Contents	Status/Rep. length	Codes / contents
C507	DATE/TIME/PERIOD	M	
2005	Date/time/period qualifier	M an..3	35 = Delivery date/time, actual
2380	Date/time/period	C an..35	76 = Delivery date/time, scheduled for
2379	Date/time/period format qualifier	C an..3	189 = Departure date/time, scheduled
			The value of a date in a specified representation
			102 = CCYYMMDD
			616 = CCYYWW
Example: DTM+76:20000101:102'			

SG26 - C 200.000 - LIN.039			
MOA - C 10 - Monetary amount			
Function: The MOA segment specifies the total monetary amount per item line.			
Segment number: 045			
Seg-/ element	Contents	Status/Rep. length	Codes / contents
C516	MONETARY AMOUNT	M	
5025	Monetary amount type, qualifier	M an..3	66 =Goods item total
5004	Monetary amount	C n..18	# = See code list
6345	Currency, coded	C an..3	'Amount'
6343	Currency qualifier	C an..3	Use ISO 4217 currency code, e.g.: 'DKK'
4405	Status, coded	C an..3	Use ISO 4217 currency code, e.g.: 'DKK'

Example: MOA+203:15050,00'			

SG26 - C 200.000 - LIN.039			
FTX - C 99 - Free text			
Function: The FTX segment is only used in special cases to specify a text if the order confirmation requires special treatment at the recipient. Free text is difficult to handle electronically by the recipient.			
Segment number: 048			
Seg-/ element	Contents	Status/Rep. length	Codes / contents
4451	TEXT SUBJECT QUALIFIER	M an..3	AAI = General information
4453	TEXT FUNCTION, CODED	C an..3	***
C107	TEXT REFERENCE	C	
4441	Free text identification	M an..3	***
1131	Code list qualifier	C an..3	***
3055	Code list responsible agency, coded	C an..3	***
C108	TEXT LITERAL	C	
4440	Free text	M an..70	'Text'
4440	Free text	C an..70	'Text'
4440	Free text	C an..70	'Text'
4440	Free text	C an..70	'Text'
4440	Free text	C an..70	'Text'
3453	LANGUAGE, CODED	C an..3	
Example: FTX+AAI+++ This is text number 1:This is text number 2'			

SG26 - C 200.000 - LIN.039			
SG30 - C 25 - PRI.049			
PRI - M 1 - Price details			
Function: The PRI segment specifies article price per unit.			
Segment number: 049			
Seg-/ element	Contents	Status/Rep. length	Codes / contents
C509	PRICE INFORMATION	C	
5125	Price qualifier	M an..3	CAL = Calculation price AAA = Calculation net AAE = Information price excluding allowances or charges, including taxes AAF = Information price, excluding allowances or charges, and taxes NTP = Net price including VAT, including allowances/charges
5118	Price	C n..15	'Amount'
5375	Price type, coded	C an..3	CA =Catalogue
5387	Price type qualifier	C an..3	***
5284	Unit price basis	C n..9	'Number'
6411	Measure unit qualifier	C an..3	PCE = Piece # = See code list
5213	SUB-LINE PRICE CHANGE, CODED	C an..3	***
Example: PRI+AAA:43,00:::1:PCE'			

SG26 - C 200.000 - LIN.039			
SG31 - C 999 - RFF.051			
RFF - M 1 - Reference			
Function: The RFF segment is used for various references that the sender wants to be returned in the order confirmation. The segment is only used for electronic information. It is recommended only to use this segment twice.			
Segment number: 051			
Seg-/ element	Contents	Status/Rep. length	Codes / contents
C506	REFERENCE	M	
1153	Reference qualifier	M an..3	Code that indicates what the reference in DE 1154 states. CR = Customer reference number
1154	Reference number	C an..35	'Reference to be returned'
1156	Line number	C an..6	***
4000	Reference version number	C an..35	***
Example: RFF+CR:974351-CBA/Z'			

SG26 - C 200.000 - LIN 039			
SG32 - C 10 - PAC.053			
PAC - M 1 - Package			
Function: The PAC segment species number of physical dispatch units and/or packaging for the order.			
Segment number: 053			
Seg-/ element	Contents	Status/Rep. length	Codes / contents
7224	NUMBER OF PACKAGES	C n..8	'Number'
C531	PACKAGING DETAILS	C	
7075	Packaging level, coded	C an..3	***
7233	Packaging related information, coded	C an..3	52 = Package bar-coded UCC or EAN-128
7073	Packaging terms and conditions, coded	C	***
C202	PACKAGE TYPE		
7065	Type of packages identification	C an..17	# = See code list
1131	Code list qualifier	C an..3	***
3055	Code list responsible agency, coded	C an..3	***
7064	Type of packages	C an..35	'text'
C402	PACKAGE TYPE, IDENTIFICATION	C	
7077	Item description type, coded	M an..3	***
7064	Type of packages	M an..35	***
7143	Item number type, coded	C an..3	***
7064	Type of packages	C an..35	***
7143	Item number type, coded	C an..3	***
C532	RETURNABLE PACKAGE DETAILS	C	
8395	Returnable package freight payment responsibility, coded	C an..3	***
8393	Returnable package load contents, coded	C an..3	***
Example: PAC+1++CT'			

SG26	- C 200.000 - LIN.039		
SG32	- C 10 - PAC.053		
SG34	- C 5 - PCI.054		
PCI - M 1 - Package identification			
Function: The PCI segment specifies the marking of the dispatch. It is only to be used in case of special marking.			
Segment number: 054			
Seg-/Element	Contents	Status/Rep. length	Codes / contents
4233	MARKING INSTRUCTIONS, CODED	C an..3	28 = Free text
C210	MARKS & LABELS	C	States relevant marks and labels
7102	Shipping marks	M an..35	'text'
7102	Shipping marks	C an..35	'text'
7102	Shipping marks	C an..35	'text'
7102	Shipping marks	C an..35	'text'
7102	Shipping marks	C an..35	'text'
7102	Shipping marks	C an..35	'text'
7102	Shipping marks	C an..35	'text'
7102	Shipping marks	C an..35	'text'
7102	Shipping marks	C an..35	'text'
8275	CONTAINER/PACKAGE STATUS, CODED	C an..3	***
C827	TYPE OF MARKING	C	
7511	Type of marking, coded	M an..3	***
1131	Code list qualifier	C an..3	***
3055	Code list responsible agency, coded	C an..3	***
Example: PAC+1++CT'PCI+28+To be placed on the first floor to the right'			

SG26	- C 200.000 - LIN.039		
SG37	- C 99 - NAD.063		
NAD - M 1 - Name and address			
Function:			
The NAD segment group is used in the detail section only to specify - for each line number - any other delivery place than the one specified in the heading section.			
Segment number:			
063			
Seg-/ element	Contents	Status/Rep. length	Codes / contents
3035	PARTY QUALIFIER	M an..3	DP = Delivery party
C082	PARTY IDENTIFICATION DETAILS	C	
3039	Party id. Identification	<u>M an..35</u>	***
1131	Code list qualifier	C an..3	***
3055	Code list responsible agency, coded	C an..3	***
C058	NAME AND ADDRESS	C	
3124	Name and address line	M an..35	***
3124	Name and address line	C an..35	***
3124	Name and address line	C an..35	***
3124	Name and address line	C an..35	***
3124	Name and address line	C an..35	***
C080	PARTY NAME	C	Party name
3036	Party name	M an..35	Delivery party'
3036	Party name	C an..35	'text'
3036	Party name	C an..35	'text'
3036	Party name	C an..35	'text'
3036	Party name	C an..35	'text'
3045	Party name format, coded	C an..3	***
C059	STREET	C	Specification of street, number/p.o. box
3042	Street and number/p.o. box	M an..35	
3042	Street and number/p.o. box	C an..35	
3042	Street and number/p.o. box	C an..35	***
3042	Street and number/p.o. box	C an..35	***
3164	CITY NAME	C an..35	City name
3229	COUNTRY SUB-ENTITY IDENTIFICATION	C an..9	***
3251	POST CODE IDENTIFICATION	C an..9	Post code
3207	COUNTRY, CODED	C an..3	***
Example: NAD+DP+++Brødrene Dahl+Storgade 9+Nordby++2234'			

SG26	- C 200.000 - LIN.039		
SG37	- C 99 - NAD.063		
SG40	- C 5 - CTA.064		
CTA - M 1 - Contact information			
Function: The CTA and COM (no. 065) segments in which a recipient, contact, department and telephone number may be specified may be added to the NAD (no. 063).			
Segment number: 064			
Seg-/ element	Contents	Status/Rep. length	Codes / contents
3139	CONTACT FUNCTION, CODED	C an..3	GR = Goods receiving contact
C056	DEPARTMENT OR EMPLOYEE DETAILS	C	
3413	Department or employee identification	C an..17	'Department number'
3412	Department or employee	C an..35	'Name'
Example: CTA+GR+09:Hans Hansen'			

SG26	- C 200.000 - LIN.039		
SG37	- C 99 - NAD.063		
SG40	- C 5 - CTA.064		
COM - C 5 - Communication contact			
Function: The CTA (no. 064) and COM segment in which a recipient, contact, department and telephone number may be specified may be added to the NAD (no. 063).			
Segment number: 065			
Seg-/ Element	Contents	Status/Rep. length	Codes / contents
C076	COMMUNICATION CONTACT	M	
3148	Communication number	M an..51	Information about e.g. telephone- or fax- number
3155	Communication channel qualifier	M an..3	TE = Telephone FX = fax EM = Electronic mail
Example: COM+42450145:TE'			

SG26 - C 200.000 - LIN.039			
SG41 - C 99 - ALC.066			
ALC - M 1 - Allowance or charge			
Function: The ALC segment specifies allowance or charge. These may be specified in percentages in the PCD (no 071) segment, in amount in the MOA (no. 073) segment.			
Segment number: 066			
Seg-/Element	Contents	Status/Rep. length	Codes / contents
5463	ALLOWANCE OR CHARGE QUALIFIER	M an..3	A = Allowance C = Charge
C552	ALLOWANCE/CHARGE INFORMATION	C	
1230	Allowance or charge number	C an..35	***
5189	Charge/allowance description, coded	C an..3	***
4471	SETTLEMENT, CODED	C an..3	***
1227	CALCULATION SEQUENCE INDICATOR, CODED	C an..3	***
C214	SPECIAL SERVICES IDENTIFICATION	C	
7161	Special services, coded	C an..3	CL = Contract allowance # = See code list
1131	Code list qualifier	C an..3	***
3055	Code list responsible agency, coded	C an..3	***
7160	Special service	C an..35	***
7160	Special service	C an..35	***
Example: ALC+AAA++++CL'			

SG26 - C 200.000 - LIN.039 SG41 - C 99 - ALC.066 SG43 - C 1 - PCD.071			
PCD - M 1 - Percentage details			
Function: Specifies percentage details. Segment number: 071			
Seg-/Element	Contents	Status/Rep. length	Codes / contents
C501	PERCENTAGE DETAILS	M	
5245	Percentage qualifier	M an..3	3 = Allowance or charge
5482	Percentage	C n..10	'Percentage'
5249	Percentage basis, coded	C an..3	13 = Invoice value
1131	Code list qualifier	C an..3	***
3055	Code list responsible agency, coded	C an..3	***
Example: PCD+3:30'			

SG26 - C 200.000 - LIN.039 SG41 - C 99 - ALC.066 SG44 - C 2 - MOA.073			
MOA - M 1 - Monetary amount			
Function: Specifies monetary amount. Segment number: 073			
Seg-/Element	Contents	Status/Rep. length	Codes / contents
C516	MONETARY AMOUNT	M	
5025	Monetary amount type, qualifier	M an..3	259 = Total charges 260 = Total allowances 176 = Message total duty/tax/fee amount 86 = Message total monetary amount 79 = Total line items amount # See code list 'Amount' Use ISO 4217 currency code, e.g.: 'DKK' Use ISO 4217 currency code, e.g.: 'DKK' ***
5004	Monetary amount	C n..18	
6345	Currency, coded	C an..3	
6343	Currency qualifier	C an..3	
4405	Status, coded	C an..3	
Example: MOA+203:15050,00'			

Summary section

UNS - M 1 - Section control			
Function: The UNS segment separates the summary section from the detail section.			
Segment number: 080			
Seg-/ element	Contents	Status/Rep. length	Codes / contents
0081	SECTION ID	M a1	S = Separator between detail and summary section
Example: UNS+S'			

MOA - C 12 - Monetary amount			
Function: The MOA segment specifies the total amount per message. The amount is the sum of the line item total amount in the MOA segment minus allowances and charges if any.			
Segment number: 081			
Seg-/ element	Contents	Status/Rep. length	Codes / contents
C516	MONETARY AMOUNT	M	
5025	Monetary amount type qualifier	M an..3	Code, that indicates what the amount in DE 5004 states 79 = Total line items amount # See code list
5004	Monetary amount	C n..18	Specification of amount qualified in DE 5025
6345	Currency, coded	C an..3	Use ISO 4217 currency code, e.g.: 'DKK'
6343	Currency qualifier	C an..3	Use ISO 4217 currency code, e.g.: 'DKK'
4405	Status, coded	C an..3	***
Example: MOA+79:61453,00'			

UNT - M 1 - The ending of message			
Function: The UNT segment ends the message and the UNZ ends the dispatch.			
Segment number: 083			
Seg-/ element	Contents	Status/Rep. length	Codes / contents
0074	NUMBER OF SEGMENTS IN THE MESSAGE	M n..6	<i>Number of segments used in the message</i>
0062	MESSAGE REFERENCE NUMBER	M an..14	<i>'Same as UNH'</i>
UNZ - M 1 - The ending of dispatch			
0036	DISPATCH CONTROL COUNTING	M n..6	<i>'Number of messages'</i>
0020	DISPATCH CONTROL REF.	M an..14	<i>'Same as UNB'</i>
Example: <i>UNT+55+12345'</i> <i>UNZ+1+ORDERSP999999'</i>			

Example of order confirmation**Order confirm.**

① ②

Køber: Sanistål A/S Aalborg Hans Jensen ⑨ Tlf.: 98132333 ⑩ EAN/EDI-lokationsnr.: ⑧ 5790000010622	Sælger: Danfoss A/S Salg Danmark Søren Hanser ⑥ Tlf.: 89489111 ⑦ EAN/EDI-lokationsnr.: ⑤ 5790000013340	Dokumentnummer: ② S75113-B Dokumentdato: ③ 01-10-2000 Leveringsdato: ④ 14-02-2000
Transportmåde: Fragtmand ⑬ Fragtfører: Danske Fragtmænd ⑭ ⑮	Leveringssted: Sanistål A/S ⑪ Bavneshøjvej 2-14 8600 Silkeborg Jesper Rasmussen ⑫ Tlf.: 86820700 ⑬ EAN/EDI-lokationsnr.:	Fakturaadresse: Sanistål A/S ⑭ Aalborg Tlf.: 98132333 ⑮ EAN/EDI-lokationsnr.:

EAN-varenr.	Tekst	Accept. Kvantum	Rest. kvantum	Leveringsdato	Pris	Total
⑰ 5702525016943	0 50 USG 80H Oliedvse	⑱ 500		14-02-2000	⑳ 43 00	⑲ 15050 00
⑳ 5702425017155	1 00 USG 80H Oliedvse	㉒ 500		14-02-2000	㉔ 43 00	㉓ 15050 00
㉕ 5702420003023	RA/VP Zoneferm Inkl box	㉖ 72		14-02-2000	㉘ 275 00	㉗ 13860 00
㉙ 5702420004730	RA-K Ventilhus	㉚ 210	㉛ 35	14-02-2000/ 01-03-2000	㉜ 102 00	㉝ 14994,00 2499,00

Lærekøbsrabat er fratrukket

Total ordrebælb
㉞ 61453 00

Example of EDIFACT for DAVID order confirmation

Ref. No.	EDI-string	Explanation	Information fom...
	HEADING SECTION		
1	UNH+12345+ORDERSP:D:96A:UN:DAV050'	Identification of order confirmation	
2	BGM+231+S75113-B'	Number of order confirmation	
3		Document date. The date of the UNB segment is used	
4	DTM+189:20000214:102'	Planned date of delivery for the entire order	
	RFF+CR:974711-CBA/Z'	Electronic reference copied from the order	Order
5	NAD+SE+5790000013340'	The EAN lokation number of the supplier	Order
6	CTA+PD+:Søren Hansen'	The supplier's contact person concerning the delivery	Order
7	COM+89489111:TE'	Seller's telephone number	Order
8	NAD+BY+5790000010622'	The EAN location number of the customer	Order
9	CTA+PD+04:Hans Jensen'	The customer's contact person concerning the delivery	Order
10	COM+98132333:TE'	Buyer's telephone number	Order
11	NAD+DP+++Sanistål A/S+Bavnehøjvej 2-14+Silkeborg++8600'	Delivery address	Order
12	CTA+GR+11:Jesper Rasmussen'	Contact person at receipt of goods	Order
13	COM+86820700:TE'	Telephone number of the delivery address	Order
14	NAD+IV+++Sanistål A/S++Ålborg'	Invoice address	Order
15	COM+98132333:TE'	Telephone number of the invoice address	Order
16	TDT+20++30++:::Danske Fragtmænd'	Mode of transport and transport company	Order
	DETAIL SECTION		
17	LIN+1++5702525016943:EN'	1 st item line, EAN article number	Order
	PIA+1+03H8908:MF'	Additional product ID, Manufacturer's article number	Order
18	QTY+113:500:PCE'	Quantity to be delivered is 500 pieces	Order
19	MOA+203:15050,00'	Total amount of the item line excl. VAT	
20	PRI+AAA:43,00::1:PCE'	Price of 1 piece of the item according to database	
	RFF+CR:974351-CBA/Z'	Electronic reference	Order
	ALC+A++++CL'	Allowances (Stock purchase)	
	PCD+3:30'	Allowance is 30%	
21	LIN+2++5702425017155:EN'	2 nd item line, EAN article number	Order
	PIA+1+030H8920:MF'	Additional product ID, Manufacturer's article number	Order
22	QTY+113:500:PCE'	Quantity to be delivered is 500 pieces	Order
23	MOA+203:15050,00'	Total amount of the item line excl. VAT	
24	PRI+AAA:43,00::1:PCE'	Price of 1 piece of the item according to database	Order
	RFF+CR:974352-CBA/Z'	Electronic reference	Order
	ALC+A++++CL'	Allowances (Stock purchase)	
	PCD+3:30'	Allowance is 30%	
25	LIN+3++5702420003023:EN'	3 rd item line, EAN article number	Order
	PIA+1+013G2941:MF'	Additional product ID, Manufacturer's article number	Order
26	QTY+113:72:PCE'	Quantity to be delivered is 72 pieces	Order

Continue...

Ref. No.	EDI-string	Explanation	Information from...
27	MOA+203:13860,00'	Total amount of the item line excl. VAT	
28	PRI+AAA:275,00::1:PCE'	Price of 1 piece of the item according to database	
	RFF+CR:974782-CBA/Z'	Electronic reference	Order
	ALC+A++++CL'	Allowances (Stock purchase)	
	PCD+3:30'	Allowance is 30%	
29	LIN+4+++5702420004730:EN'	4 th item line, EAN article number	Order
	PIA+1+030G3244:MF'	Additional product ID, Manufacturer's article number	Order
30	QTY+113:210:PCE'	Quantity to be delivered is 210 pieces	
31	MOA+203:14994,00'	Total amount of the item line excl. VAT	
32	PRI+AAA:102,00::1:PCE'	Price of 1 piece of the item according to database	
	RFF+CR:974512-CBA/Z'	Electronic reference	Order
	ALC+A++++CL'	Allowances (Stock purchase)	
	PCD+3:30'	Allowance is 30%	
29	LIN+5+++5702420004730:EN'	4 th item line, EAN article number. Outstanding quantity	Order
	PIA+1+030G3244:MF'	Additional product ID, Manufacturer's article number	Order
33	QTY+73:35:PCE'	Quantity of outstanding quantity is 35 pieces	
34	DTM+76:20000301:102'	Planned time of delivery for outstanding quantity	
31	MOA+203:2499,00'	Total amount of item line excl. VAT	
32	PRI+AAA:102,00::1PCE'	Price of 1 piece of the item according to database	
	RFF+CR:974782-CBA/Z'	Electronic reference	Order
	ALC+A++++CL'	Allowances (Stock purchase)	
	PCD+3:30'	Allowance is 30%	
	SUMSEKTION		
	UNS+S'		
35	MOA+79:61453,00'	Total amount minus allowance for the whole order	
	UNT+55+12345'		

The UNB and UNZ segments are not included.

When the segments in a message are sent, they are not to be separated by blank characters. The segments are sent as one block where each line normally consists of 80 characters.

UNH+12345+ORDERS:D:96A:UN:DAV050'BGM+231+S75113-B'DTM+2:20000214:102'RFF+CR:9747
11-CBA/Z'NAD+SE+5790000013340'CTA+PD+:Søren Hansen'COM+89489111:TE'NAD+BY+579000
0010622'CTA+PD+04:Hans Jensen'COM+98132333:TE'NAD+DP+++Sanistål A/S+Bavnehøjvej
2-14+Silkeborg++8600'CTA+GR+11:Jesper Rasmussen'COM+86820700:TE'NAD+IV+++Sanistå
l A/S++Ålborg'COM+98132333:TE'TDT+20++30++:::Danske Fragtmænd'LIN+1++57024250169
43:EN'PIA+1+03H8908:MF'QTY+113:500:PCE'MOA+203:15050,00'PRI+AAA:43,00:::1:PCE'RFF
+CR:974351-CBA/Z'ALC+A+++CL'PCD+3:30'LIN+2++5702425017155:EN'PIA+1+030H8920:MF'
QTY+113:500:PCE'MOA+203:15050,00'PRI+AAA:43,00:::1:PCE'RFF+CR:974352-CBA/Z'ALC+A+
+++CL'PCD+3:30'LIN+3++5702420003023:EN'PIA+1+013G2941:MF'QTY+113:72:PCE'MOA+203:
13860,00'PRI+AAA:275,00:::1:PCE'RFF+CR:974782-CBA/Z'ALC+A+++CL'PCD+3:30'LIN+4++5
702420004730:EN'PIA+1+030G3244:MF'QTY+113:210:PCE'MOA+203:14994,00'PRI+AAA:102,0
0:::1:PCE'RFF+CR:974512-CBA/Z'ALC+A+++CL'PCD+3:30'LIN+5++5702420004730:EN'PIA+1+
030G3244:MF'QTY+73:35:PCE'DTM+76:20000201:102'MOA+203:2499,00'PRI+AAA:102,00:::1:
PCE'RFF+CR:974782-CBA/Z'ALC+A+++CL'PCD+3:30'UNS+S'MOA+79:61453,00'UNT+55+12345'

